

PROVISIONAL PROGRAMME

Pond Investigation

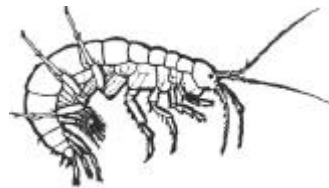
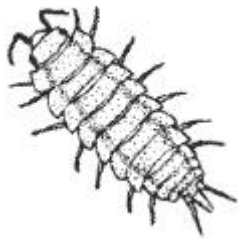
- Introduce minibeasts and habitats.
- Consider what may be found in the pond, discussing camouflage.
- Pond dipping.
- Use simple keys to identify minibeasts.

Woolly Worms

- Illustrate the concept of camouflage of woodland minibeasts.

Woodland Investigation

- Consider what may be found in the woods, discussing camouflage.
- Minibeast hunt.
- Use simple keys to identify minibeasts.



LEARNING OUTCOMES

most children will (N.C. Level 2a):

- learn some names of plants and animals
- understand how to sort living things into groups using simple keys
- identify differences between two habitats and the things found there, saying whether they found what they expected
- identify ways in which an animal is suited to its environment (i.e. camouflage)
- learn how to pond dip and search for minibeasts

some children will not have made so much progress and will (N.C. Level 2c):

- recognise some differences between the plants and animals that live in two different habitat types

some children will have progressed further and will also (N.C. Level 3):

- suggest reasons for the differences in plants and animals between two different habitat types

SAFETY All activities and sites are risk assessed. Adult: children ratio of 1:6.

CLOTHING Appropriate outdoor clothing. Indoor & outdoor footwear/wellies.

TRANSPORT

BEHAVIOUR Teachers are responsible for good behaviour & lunchtime supervision.

NAME LABELS If possible please provide pupils with name labels.

SHOP Pocket money for the shop.

RESOURCES All resources are provided.

ICT Use of digital cameras to record the day's activities.

ASSESSMENT

Assessment through questioning and plenary including AfL games.

PRIOR LEARNING

Introduce the variety of minibeasts and where they live.

FUTURE LEARNING

Produce an information sheet about the habitats and the animals found there.